



Corfe Avenue | Harrow | HA2 8TA

Measuring in at over 1100 square foot (inclusive of the garage) this semi detached house is offered chain free and can be set up as a four bedroom. With a ground floor extension giving you a larger kitchen diner the property is located on one of South Harrow's most popular roads. Internal viewing is recommended.

Asking Price Of £550,000

Freehold



- Semi Detached House
- Four Bedrooms
- Open Plan Through Lounge
- Kitchen with door to Garden
- Family Bathroom
- Gas Central Heating
- Double Glazing
- Garden
- Garage with shared drive
- Ideal Family Home

Property Description

INTERNALLY

This semi detached house set in a peaceful residential area is an ideal family home, the ground floor comprises of entrance door opening into open plan living space incorporating stairs to first floor, understairs storage and door to 4th bedroom/study.through lounge with decorative opening at the rear leading into a large kitchen with base units, built under oven with hob and extractor over and breakfast bar. The kitchen is a lovely bright room as it has dual aspect large windows and a part glazed door opening into the garden. The fourth bedroom/study. Stairs to first floor landing with doors to two double bedrooms , one single bedroom and a family. The property has gas central heating and double glazing.

EXTERNALLY

Wall enclosed front garden.
Shared drive leading to garage.

LOCATION

Corfe Avenue is just a short walk, 0.3 of a mile to Alexandra park, 0.5 of a mile to local shops including Asda. Northolt Park Station is just 0.6 miles away allowing easy access to London Marylebone. South Harrow's busy shopping centre with restaurants, cafes and shops along with Piccadilly Line Tube Station is 1 miles from the property. Local schools include Earlsmead Primary School and Heathland School, Harrow Independent College and Rooks Heath College.

Tenure

Freehold

Council Tax Band

D £2,042

Viewing Arrangements

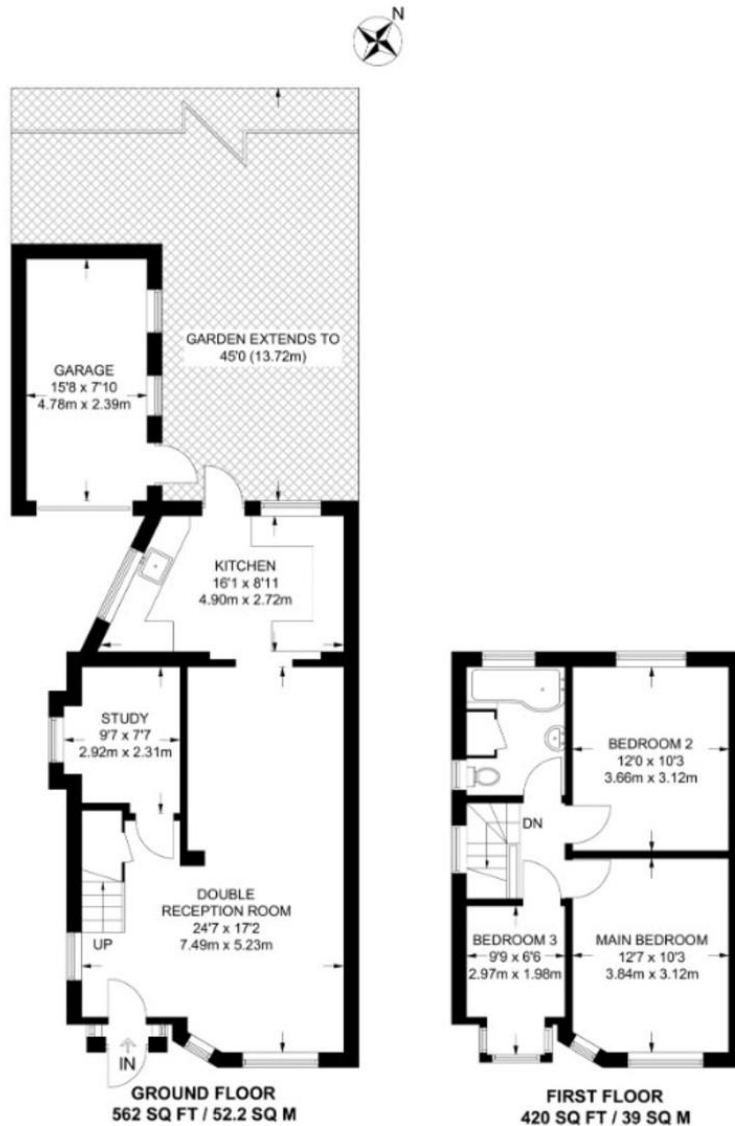
Strictly by appointment

MORTGAGES ARRANGED AT COMPETITIVE RATES

(Your home is at risk if you do not keep up repayments on the mortgage of your home or any other loans secured on it).

These details are set out as a guide only and do not form part of any contract. As the seller's agent we have not carried out a structural survey and are not conveyancing experts and as such we cannot comment on the condition of the property, or issues relating to title or other legal matters that may affect this property, unless we have been made aware of such matters. Interested parties should employ their own professionals to make such enquiries before making any transactional decisions. Items shown in any photos are for illustration purposes only and may not be included in the sale. Purchasers should refer to the fixtures and fittings list obtained by their solicitor. We have not tested fittings, appliances or central heating systems, where applicable. All measurements are approximate.





This plan has been drawn for illustrative and identification purposes only.

